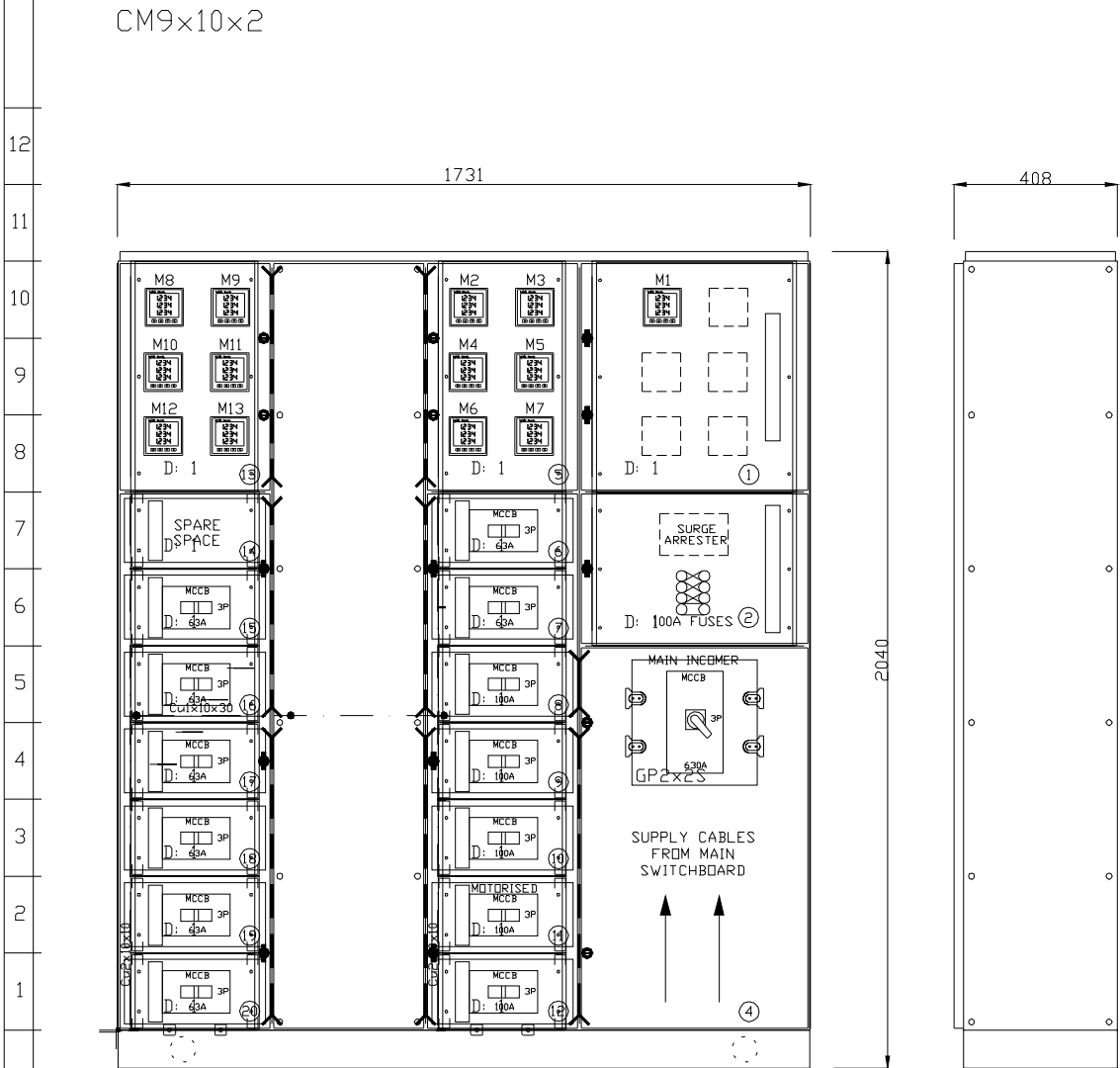


MODUL	1	2	3	4	5	6	7	8	9	10	11	12	13	14	15	16	17	18	19	20	21	22	23	24	25
-------	---	---	---	---	---	---	---	---	---	----	----	----	----	----	----	----	----	----	----	----	----	----	----	----	----

K4456/A  
PRONI, BELFAST  
SUB SWITCHBOARD



ITEM No.	RATING (A)	POLES	DESCRIPTION	INSTRUMENTATION
①	-	-	INSTRUMENTATION SECTION	M1
②	-	-	SURGE SUPPRESSOR	-
③	630A	TP&N	MAIN ISOLATOR	-
④	-	-	MAINS INCOMING CABLE SECTION	-
⑤	-	-	INSTRUMENTATION SECTION	M2 - M7
⑥	63A	TP&N	SUPPLY TO 6 WAY TP&N DIST. BOARD 'CP/GB'	M1
⑦	63A	TP&N	SUPPLY TO 6 WAY TP&N DIST. BOARD 'CP/1B'	M2
⑧	100A	TP&N	SUPPLY TO 18 WAY TP&N DIST. BOARD 'GLP/GB'	M3
⑨	100A	TP&N	SUPPLY TO 18 WAY TP&N DIST. BOARD 'GLP/1B'	M4
⑩	100A	TP&N	SUPPLY TO 18 WAY TP&N DIST. BOARD 'GLP/2B'	M5
⑪	100A	TP&N	SUPPLY TO AHU PLANTROOM CONTROL PANEL	M6
⑫	100A	TP&N	SPARE	M7
⑬	-	-	INSTRUMENTATION SECTION	M8 - M13
⑭	-	-	SPARE SPACE	M7
⑮	63A	TP&N	SUPPLY TO 6 WAY TP&N DIST. BOARD '1T/3'	M8
⑯	63A	TP&N	SUPPLY TO 6 WAY TP&N DIST. BOARD 'CP/2B'	M9
⑰	63A	TP&N	SUPPLY TO 6 WAY TP&N DIST. BOARD '1T/5'	M10
⑱	63A	TP&N	SUPPLY TO 8 WAY SP&N DIST. BOARD 'EXT/L'	M11
⑲	63A	TP&N	SPARE	M12
⑳	63A	TP&N	SPARE	M13

Ref. No.: K4456A-01	Colour: RAL 7035	Standard: IEC 60439-1	Main busbar: 630A	Cable entry: BOTTOM	Rev.: 00	Page No.: 1	Width: 1731
Originator: SD	IP: 43	Voltage: 415	Ipk: 25kA	Cable exit: TOP/BOTTOM	Check: -	Next page: 2	Height: 2040
Date: 10.02.10	Form: 4 Type 5	Poles: 3 P+N	ICW: 25kA	Scale: NTS	DWG No.: K4456A-02	DWG Rev.: 00	Depth: 408
Drawing No.: K4456A-01	Access: FRONT	Earthing System: -	Droppers: -	Project: PRONI, Belfast			



KANE ENGINEERING LIMITED  
 GLENFORD ROAD, NEWTOWNARDS, CO. DOWN,  
 NORTHERN IRELAND BT23 4AU  
 Tel: 028 9181 4465  
 Fax: 028 9181 8900  
[www.LowVoltageSwitchgear.com](http://www.LowVoltageSwitchgear.com)