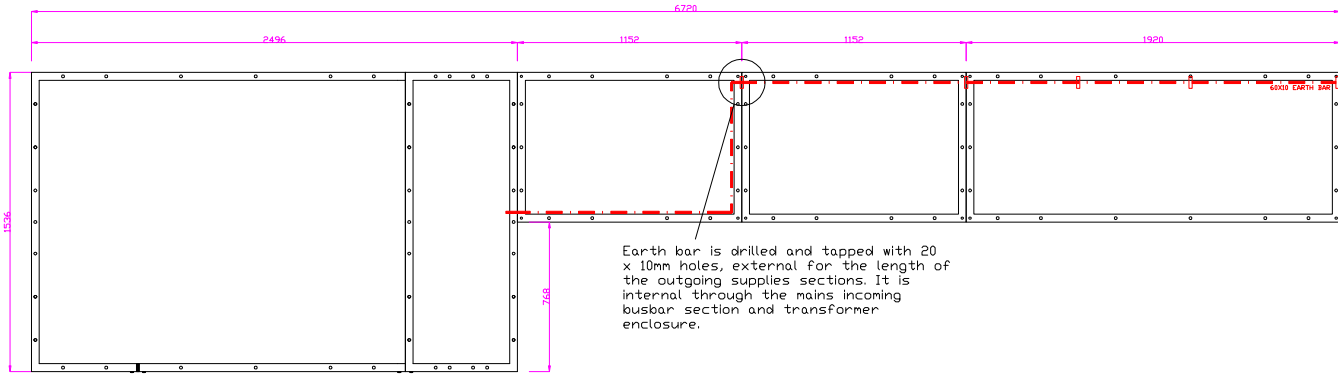


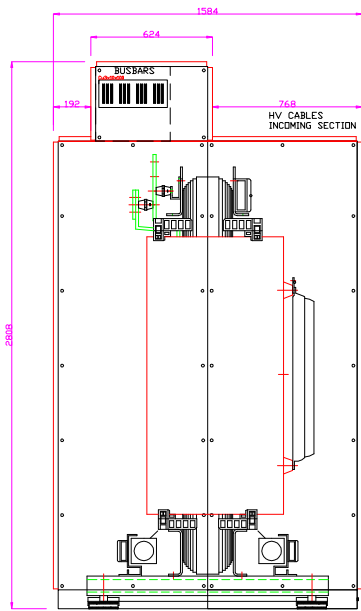
23.02.12 – Issue 09 Comments:
 1. 630A 3P MCCB REPLACED WITH PAIR OF 400A 3P&N FUSESWITCHES (MECHANICALLY INTERLOCKED WITH 4P HANDLE).

21.04.11 – Issue 07 Comments:
 1. SB7-RMU terminals revised to match RMU as built drawings.

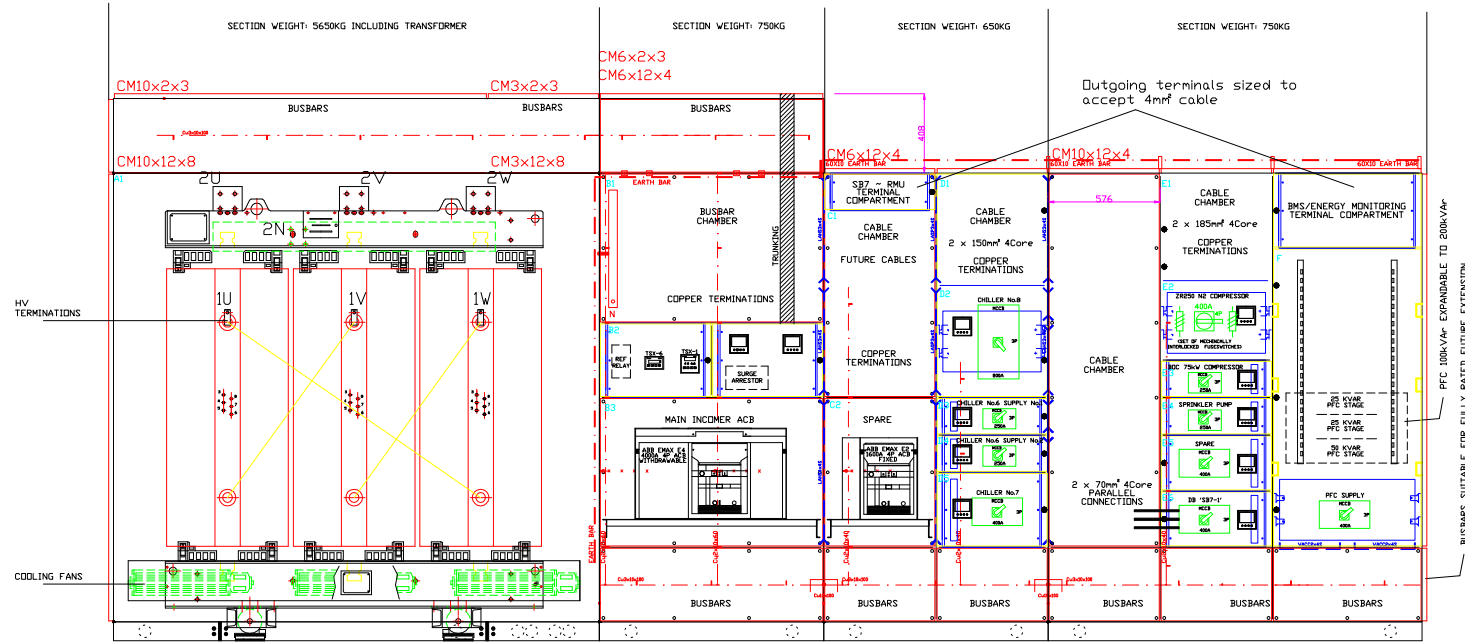


Earth bar is drilled and tapped with 20 x 10mm holes, external for the length of the outgoing supplies sections. It is internal through the mains incoming busbar section and transformer enclosure.

FLINTH DRAWING



SIDE VIEW



FRONT VIEW

REMOVABLE FLINTH SECTION FOR TX INSTALLATION

Outgoing terminals sized to accept 4mm² cable

BUSBARS SUITABLE FOR FULLY RATED FUTURE EXTENSION



THIS DESIGN IS THE PROPERTY OF KANE ENGINEERING LIMITED AND MUST NOT BE LENT OR COPIED WITHOUT THE PERMISSION OF KANE ENGINEERING LIMITED

KANE ENGINEERING LIMITED
 GLENFORD ROAD, NEWTOWNARDS, CO. DOWN
 NORTHERN IRELAND BT23 4AU
 TEL: 028 9181 4465
 FAX: 028 9181 8900

COLOUR	RAL 7035	POLES	4 POLE	STANDARD	IEC 60439-1	ACCESS	FRONT	DESIGNED BY	DK	JOB No.	K4534-A	DRG. No	K4534A-01
IP	43	MAIN BUSBAR	4000A	VOLTAGE	11KV-400V	lcw	50KA	CADED BY	JT				
FORM	4 TYPE 6	ipk	80KA	EARTHING SYSTEM	TN-C-S			CHECKED BY					
								DATE CHECKED					
								DATE DRAWN	11.02.11				
								SHEET	1 OF 8				
08	JT	23.02.12						SCALE	N.T.S.				
07	JT	27.05.11						ISSUE	09				
06 - 02	JT	28.03.11											
MOD	BY	DATE											
				REVISED TO COMMENTS									
				AS INSTALLED BY KANE ENGINEERING									
				SEE PREV ISSUES									
				MODIFICATION DESCRIPTION									
						CHECKED BY	DATE						

SEAGATE TECHNOLOGIES Tx7 & SB7 INSTALLATION

PACKAGE SUB-STATION SB7 LAYOUT FOR MANUFACTURE