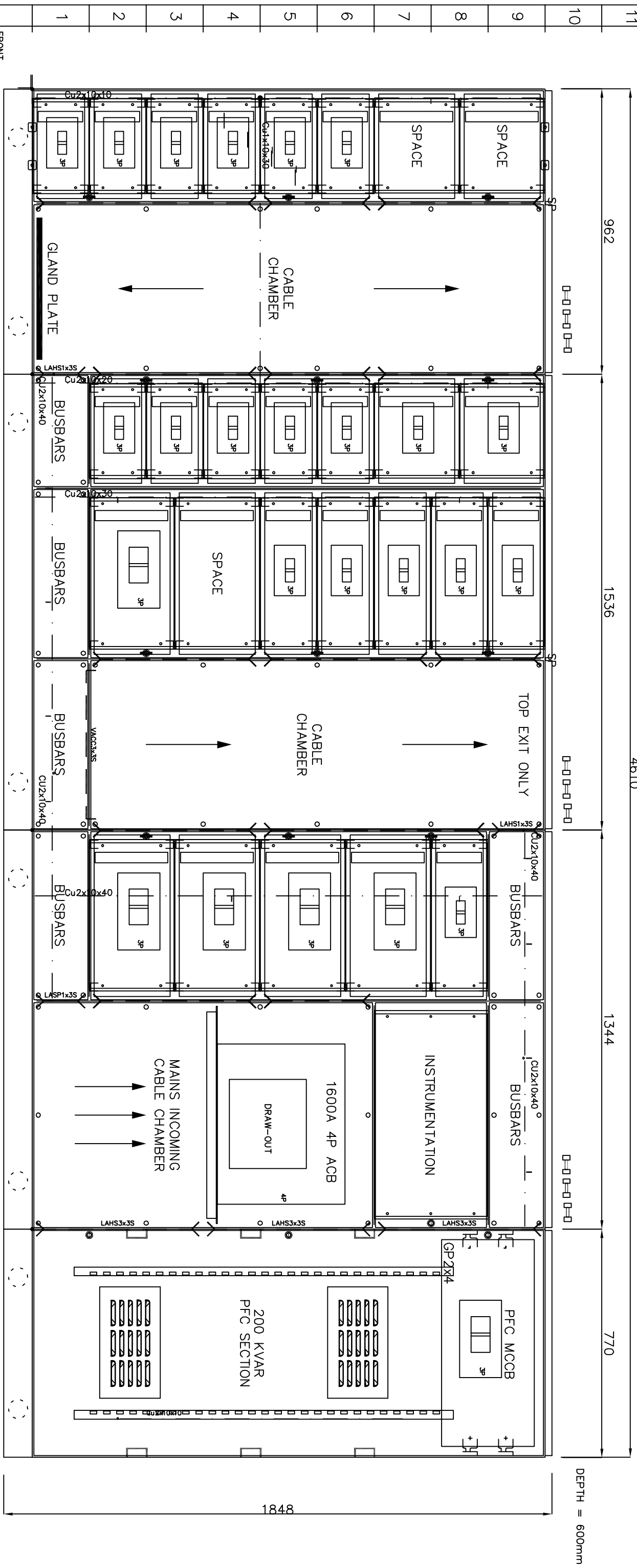


MODUL	1	2	3	4	5	6	7	8	9	10	11	12	13	14	15	16	17	18	19	20	21	22	23	24	25
-------	---	---	---	---	---	---	---	---	---	----	----	----	----	----	----	----	----	----	----	----	----	----	----	----	----

CM5x9x3 CM8x9x3 CM7x9x3 CM4x9x3

E9902-R5
 DEBENHAMMS, NEWBRIDGE
 MAIN SWITCHBOARD
 19.10.05



Ref. No.:	E9902-R5	Colour:	RAL 7035	Standard:	IEC 60439-1	Main busbar:	1600A	Cable entry:	Bottom	Rev.:	R5	Page No.:	1	Width:	4610mm
Originator:	DGK	P.:	43	Voltage:	415	pk:	50KA	Cable exit:	Top / Bottom	Check:	DK	Next page:	N/A	Height:	1828mm
Date:	19.10.05	Form:	4 TYPE 5	Poles:	3 P+N	kw:	35KA	Scale:	NTS	DWG No.:	E9902-R5	Depth:	600mm		
Drawing No.:	E9902-R5	Access:	FRONT	Earthing System:		Droppers:	1200A	Project:	Debenhams, Newbridge	DWG Rev.:	R5				



KANE ENGINEERING LIMITED
 GLENFORD ROAD, NEWTOWNARDS, CO. DOWD,
 NORTHERN IRELAND BT23 4AU
 Tel: 028 9181 4465
 Fax: 028 9181 8900
 www.LowVoltageSwitchgear.com